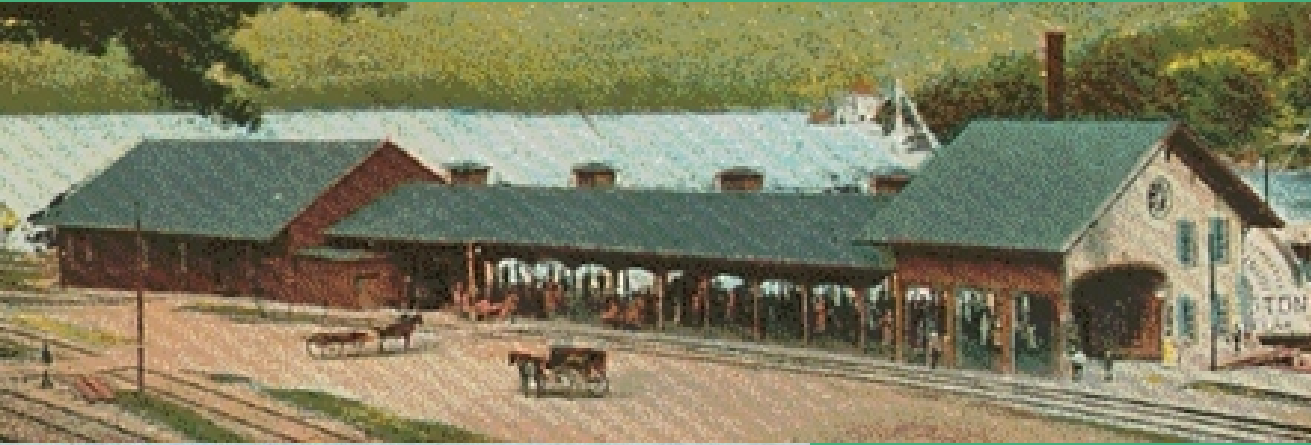


# Alton Railroad Station



Railroad Square, Alton Bay, N. H.



NOW and THEN - Now: Photo of the Alton Bay Community Center July 2004. Then: The B. & M.R.R. Station postmarked 1912.



Before the Alton Bay Community Center, there was a train station. In 1847 rail lines were established, and the railroad was in existence until 1935. The railroad consisted of many stops and stations along the way to Laconia. Across the road, where the entrance to the Alton Bay Campgrounds association is, there are still cement footings where a water tower used to be. And next to Pop's Clam Shell, there was a turntable for the trains, which was used to change the direction of the train. The current building was the 3rd Train Station in Alton, built in 1906. The 2nd train station was burned down.